

# Economical Forced Convection Oven

Basic non-programmable forced convection oven



## DKL301C/311C/401C/411C/601C/611C

Operating temp. range	Room temp. +10°C to 260°C	Temp. distribution accuracy	±2.5°C (at 260°C)	Internal capacity	27L DKL301C/311C	90L DKL401C/411C	150L DKL601C/611C
-----------------------	---------------------------	-----------------------------	-------------------	-------------------	---------------------	---------------------	----------------------

### Fixed temperature operation

#### Performance and functions

- Fixed temperature, Quick auto stop, Auto stop, and Auto start operation modes with easy control capabilities
- Settings can be made digitally using the dedicated operation menu keys or the up and down keys
- Calibration offset function as an auxiliary function

#### Safety features

- Self-diagnostic functions, MCB with over current protector, hydraulic standalone overheat prevention device



27L  
DKL301C/311C

90L  
DKL401C/411C

#### Specifications

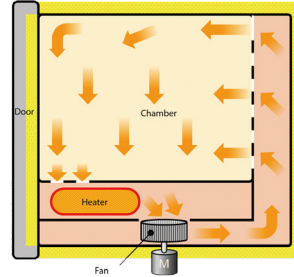
Model	DKL301C/311C	DKL401C/411C	DKL601C/611C
Circulation method	Forced air circulation		
Operating temperature range	Room temp. +10~260°C		
Temp. control accuracy	±1°C (at 260°C)		
Temp. distribution accuracy	±2.5°C (at 260°C)		
Temperature rise time	~90 min (at room temp. ~260°C)		
Interior material	Stainless steel (SUS430)		
Exterior material	Steel plate SPCC (powder coating)		
Heat insulating material	Glass wool		
Heater	SUS304 pipe heater		
	0.8kW	1.2kW	1.5kW
Fan motor	Sirocco fan 10W		
Cable port	30 mm I.D.×1 pc. (right side)		
Exhaust port	30 mm I.D.×2 pcs. (top)		
Temp. controller	PID control by microprocessor		
Temp. setting method	Digital setting by ▲/▼ keys		
Operation functions	Fixed temperature, Quick auto-stop, Auto stop, Auto start		
Additional functions	Calibration offset function		
Heater circuit control	SSR control		
Sensor	K-thermocouple		
Safety device	Self diagnostic functions (temperature sensor error, memory error, auto overheat prevention, measured temperature error), MCB with an over current protector, hydraulic standalone overheat prevention device		
Internal dimensions (W×D×H)	310×310×310 mm	450×450×450 mm	610×500×500 mm
External dimensions (W×D×H)	410×450×680 mm	560×600×820 mm	710×650×880 mm
Internal capacity	27L	90L	150L
Shelf plate with standard load	15kg/piece		
Shelf rest step number	6 steps	9 steps	12 steps
Shelf rest pitch	35mm		
Power source 50/60Hz	AC115V 7.5A / AC220V 4A	AC115V 11A / AC220V 6A	AC115V 13.5A / AC220V 7.5A
Weight	~35kg	~50kg	~65kg
Shelf plate	Stainless steel		
	2 pcs.		
Shelf bracket	4 pcs.		

Performance under the power supply condition of AC 115V and 220V are shown here.  
Operating environmental temperature range for this device is 5~35°C

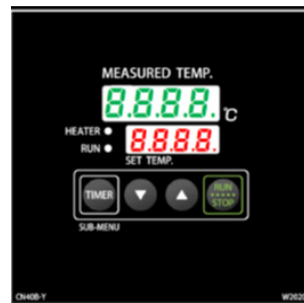


## Method

[Side view]



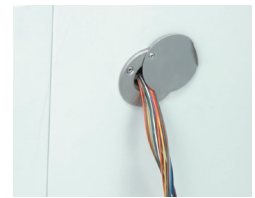
## Control Panel



## Exhaust Ports (Standard)



## Cable Port (Standard)



## Optional Items

Description	Product Code
Stand	
For DKL301C/311C ON30C	Q020101001
For DKL401C/411C/601C/611C ON61C	Q020101002
Stacking kit	
For DKL401C/411C OD40C	Q010101001
For DKL601C/611C OD60C	Q010101002
Shelf (1 pc. shelf and 2 pcs. brackets)	
For DKL301C/311C	Q110101001
For DKL401C/411C	Q110101002
For DKL601C/611C	Q110101003
*Cable port	
Dia 25mm	Q110101007
Dia 50mm	Q110101008
Seismic mat	296902

\* Please specify when ordering main unit.

## Optional Items



Stand

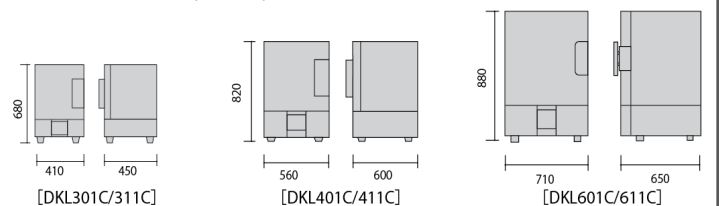


Seismic mat



Shelf (with 2 brackets)

## Dimensions (Unit:mm)



## ⚠ Attention

- Never use in flammable or explosive gas atmosphere.
- Never use explosive or flammable material.
- Caution: High temperature components.