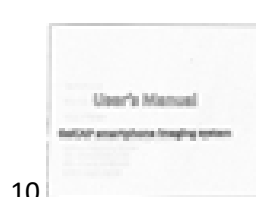
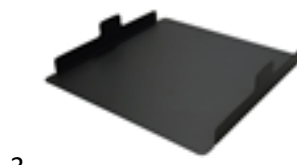


FasGel Gel illuminator User Manual

Packing List :

- (1) Light source cover
- (2) Light source
- (3) Gel illuminator tray
- (4) Filter lens clip;
- (5) Filter(s)
- (6) Filter lens holder
- (7) Amber filter protective shield
- (8) Mini USB to Micro USB cable
- (9) A/C adapter (12V, 1.5A)
- (10) User's manual



SETUP

1. Remove all internal packaging. (Figure1)
2. Place the amber filter inside lens filter holder (Figure 2). Install lens filter holder to lens filter clip (Figure 3). Connect the included AC adapter to the illuminator then plug into an electrical outlet.
3. Attach the filter lens clip to a smartphone and place the phone on the light source cover(Figure 4,5)
4. Put the light source cover on the light source. (Figure 6)
5. Connect the smartphone to the Gel illuminator with the included USB cable (Figure 7);
6. Turn on the light: You can press the button or use Software app to select your desired light source ;
7. Place the amber filter shield in position as shown in Figure 8 for gel observation or gel cutting;



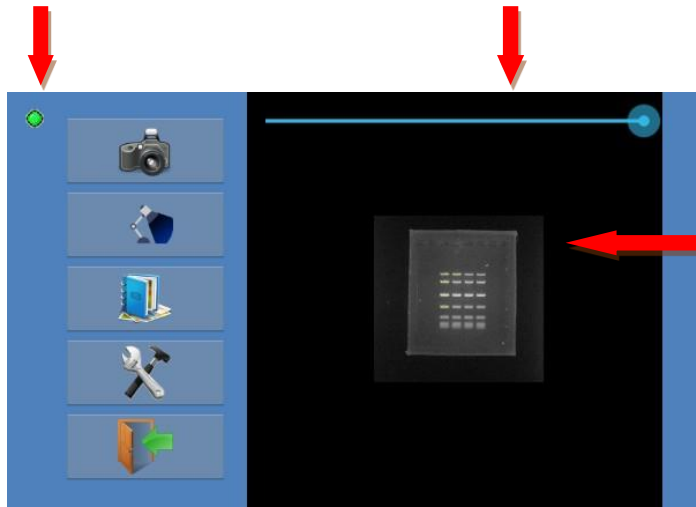
Software app

Connection status indicator:
When smartphone is connected the
Gel illuminator light source green
light is on.
Red light is on when disconnected

EV setting bar

Drag the bar to adjust
EV (exposure value)

- Right: increasing EV
- Left: decreasing EV



Zoom in / Zoom out

Pinch your fingers to
zoom in & zoom out
image



Capture image



Select light sources



Go to thumbnail viewer to see saved images

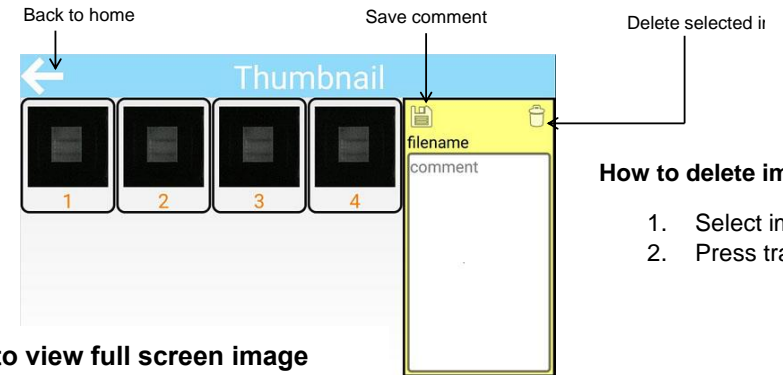


Set image format & oversaturation marking.



Quit app

Thumbnail Viewer



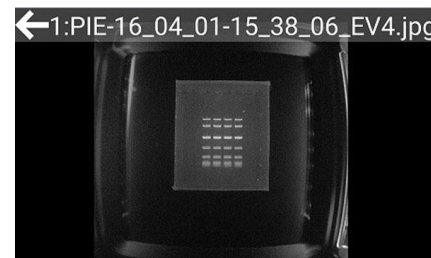
How to delete image file

1. Select image
2. Press trash icon

How to view full screen image

Open thumbnail viewer, select image,
Long-press to view full screen
image.

Press the arrow on the upper left to
return to the Thumbnail page



How to input comment:

1. Select image
2. Touch "comment" column
3. Input your comment then
press "done"
4. Press "save" icon

