

CAUTION! Do not subject the MegaMag Genie® LR Digital to excessive shock. Dropping the unit, or otherwise subjecting it to unnecessary shock (ie: using excessive force to place vessels on the unit) may crack the case and lead to unsafe conditions.

CAUTION! Failure to follow operating instructions can compromise the user's safety.

Care and Handling

The **MegaMag Genie LR Digital** should be given the care normally required for any electrical appliance. Avoid wetting or unnecessary exposure to fumes. The finish can be washed with a damp cloth (after unplugging) and soap or mild detergents, using a cloth or sponge. Keep the unit clean by immediately blotting any spills.

CAUTION! Unplug from power before cleaning. Do not immerse.

CAUTION! Do not use MegaMag Genie LR Digital in hazardous atmospheres or with hazardous materials.

CAUTION! Do not use MegaMag Genie LR Digital in applications such as mixing of flammable materials or where the transfer of mechanical energy to glass apparatus could lead to breakage.

SPECIFICATIONS

The MegaMag Genie LR Digital Magnetic Stirrer is classified as "Installation Category 2"

Environmental: 0°C – 38°C (32°F-100°F), 95% Humidity max.

| MODEL | POWER REQUIRED | AMPS |
|----------|----------------|------|
| SI-3236L | 120V | 0.65 |
| SI-3246L | 230V | 0.5 |
| SI-3286L | 100V | 1.0 |

Weight: 3.0 Kg (35 lbs.)

Maximum Load: 38 liters

Dimensions (DxWxH): 317x315x137mm (12.5x12.4x5.4in)

MegaMag Genie® LR Digital

Low Speed/Large Volume

Digital Magnetic Stirrer

Operating Instructions

Models SI-3236L through SI-3296L



80 Orville Drive, Suite 102, Bohemia, NY 11716 U.S.A.
Phone: (631) 567-4700 • Toll Free: 888-850-6208
Customer Service: custsvc@scientificindustries.com
www.scientificindustries.com

The **MegaMag Genie® LR Digital** is a low speed, large volume digital magnetic stirrer with speed/time control.

The **MegaMag Genie LR Digital** is designed to safely and reliably mix liquid volumes up to 38 liters (10 gallons) using magnetic stirring bars. The rugged housing is made with an engineering grade thermoplastic resin and can support up to 85 pounds. A timing belt driven pulley rotates a powerful rare earth magnet that couples with the stirring bar (3-inch stir bars are recommended for most applications). Mixing speeds are variable up to 50-300 RPM to facilitate gentle stirring up to full vortex mixing. The stirrer has an opto-electronic software driven “ramp to speed” feature that ensures maximum coupling between drive magnet and stir bar. The enclosure is air cooled to prevent heat transfer to mixing media. Large LED’s display speed and time (0-99 min).

OPERATING INSTRUCTIONS

We recommend you retain the original packaging for 90 days in case you need to return the product for any reason to your distributor or Scientific Industries.

1.0 - Plug the line cord into a properly grounded electrical outlet. **(120 VAC for the SI-3236L model; 230/240 VAC for the SI-3246L through SI-3276L, SI-3296L models; 100 VAC for the SI-3286L model).** Illuminated numbers in the **TIME** and **SPEED** windows indicate that the unit is ON and ready for use.

2.0 – “TIMED” Operation

Allows for unattended operation that is timed from 1 to 99 minutes.

Press the **UP/DOWN** arrow buttons beneath the **TIME** window to set the desired stirring time. Press the **UP/DOWN** arrows beneath the **SPEED** window to set the desired stirring speed. Press the **START/STOP** button to begin the stirring action. The stirrer will ramp up to the desired speed and run until the set time has elapsed. To stop the cycle before the set time has elapsed, press the **START/STOP** button. To initiate a new timed cycle, press the **START/STOP** button again.

2.1 – “CONTINUOUS” Operation

Allows for continuous unattended operation.

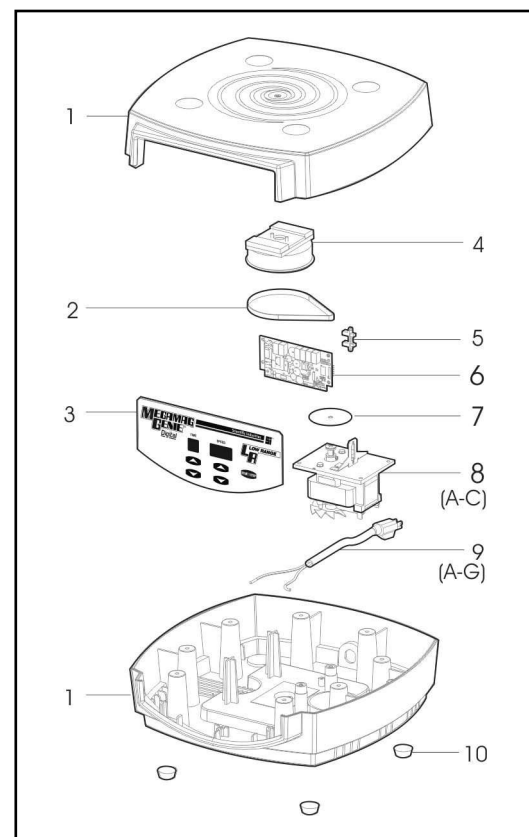
Press the UP/DOWN arrow buttons beneath the TIME window and set stirring time to “0”. Press the UP/DOWN arrows beneath the SPEED window to set the desired stirring speed. Press the START/STOP button to begin the stirring action. The stirrer will ramp up to the desired speed and run continuously. To stop the cycle, press the START/STOP button. To initiate a new continuous cycle, press the START/STOP button again.

2.2 - “SLEEP” Mode

The stirrer will automatically go into a “SLEEP” mode if the mixer is plugged in but not used for 10 minutes. The **TIME** and **SPEED** illuminated displays will go blank. Press the **START/STOP** button to “WAKE UP” the mixer.

Note: The speed control can be adjusted up or down during the mixing cycle, however, the TIME can only be adjusted before the cycle begins.

PARTS ASSEMBLY LIST: To order parts for the **MegaMag Genie® LR Digital**- Contact your local distributor or visit www.scientificindustries.com. Please specify Part No, quantity and electric voltage.



| Indicator No. | PART No. | DESCRIPTION |
|---------------|--------------|-------------------------------|
| 1 | PP-2236-400 | Top/Bottom Cover |
| 2 | HWP0091 | Belt |
| 3 | EL-3L36-575 | Key Pad Assembly |
| 4 | OK-3L36-901 | Magnet Assembly |
| 5 | EC-A236-525 | Optical Sensor |
| 6 | EB-3236L-500 | Digital Timer Board |
| 7 | OK-3L36-902 | Optical Disc Assembly |
| 8A | OK-3L36-903 | Motor 120V Assembly, Digital |
| 8B | OK-3L46-903 | Motor 230V Assembly, Digital |
| 8C | OK-3L86-903 | Motor 100V Assembly, Digital |
| 9A | 318-0510-02 | 120V Line Cord |
| 9B | OK-0246-901 | 230V Line Cord, without Plug |
| 9C | OK-0256-901 | 230V Line Cord, European Plug |
| 9D | OK-0266-901 | 230V Line Cord, British Plug |
| 9E | OK-0276-901 | 230V Line Cord, Swiss Plug |
| 9F | OK-0286-901 | 100V Line Cord |
| 9G | ECP0021 | Australian Plug (only) |
| 10 | HWP0004 | Feet (4) |