






Rotors for FRONTIER™ FC5916 and FC5916R

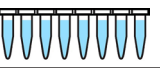


Angle Rotor 24 × 1.5/2.0 ml ID BIOSEALS	
Item No.	83041238
Rotor Capacity	24 x 1.5/2.0 ml
Rotor Type	Angle, 45°
Permissible Net Weight	24 x 3.4 g
Lowest Temperatures	-5 °C

Accessory Specifications	n/a		
Accessory Item No.	n/a	30130884	30130885
Accessory Type	n/a	Adapter	
Max. RPM (FC5916/FC5916R)	16,000/16,000		
Quantity in Package	n/a	6/pk	
Max. RCF	24,325/24,325 × g	21,463/21,463 × g	23,466/23,466 × g
Tube Specifications			
Tube Type	Microtube		
Tube volume	1.5/2.0 ml	0.2/0.4 ml	0.5 ml
Tubes per Rotor	24		
Max. Tube Diameter (mm)	11	6	8
Tube Height (mm)	40	45	



Angle Rotor 4 x 8-w PCR Strip	
Item No.	30314841
Rotor Capacity	4 x 8-w PCR Strip
Rotor Type	Angle, 45°
Permissible Net Weight	4 x 3.5 g
Lowest Temperatures	-2 °C

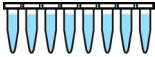
Accessory Specifications	n/a
Accessory Item No.	n/a
Accessory Type	n/a
Max. RPM (FC5916/FC5916R)	15,000/15,000
Quantity in Package	n/a
Max. RCF	15,343/15,343 × g
Tube Specifications	
Tube Type	8-w PCR Strip
Tube volume	0.2/0.4 ml
Tubes per Rotor	32
Max. Tube Diameter (mm)	n/a
Tube Height (mm)	n/a

*No Adapters

Rotors for FRONTIER™ FC5720R

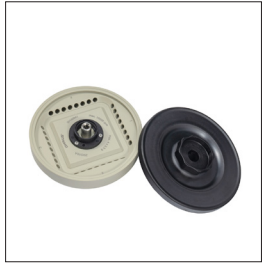


Angle Rotor 4 x 8-w PCR Strip	
Item No.	30314841
Rotor Capacity	4 x 8-w PCR Strip
Rotor Type	Angle, 45°
Permissible Net Weight	4 x 3.5 g
Lowest Temperatures	-7 °C

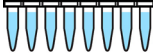
Accessory Specifications	n/a
Accessory Item No.	n/a
Accessory Type	n/a
Max. RPM	15,000
Quantity in Package	n/a
Max. RCF	15,343 × g
Tube Specifications	
Tube Type	8-w PCR Strip
Tube volume	02./04. ml
Tubes per Rotor	32
Max. Tube Diameter (mm)	n/a
Tube Height (mm)	n/a

*No Adapters

Rotors for FRONTIER™ FC5718 and FC5718R



Angle Rotor 4 x 8-w PCR Strip	
Item No.	30314841
Rotor Capacity	4 x 8-w PCR Strip
Rotor Type	Angle, 45°
Permissible Net Weight	4 x 3.5 g
Lowest Temperatures	2 °C

Accessory Specifications	n/a
Accessory Item No.	n/a
Accessory Type	n/a
Max. RPM	15,000
Quantity in Package	n/a
Max. RCF	15,343 × g
Tube Specifications	
Tube Type	8-w PCR Strip
Tube volume	02./04. ml
Tubes per Rotor	32
Max. Tube Diameter (mm)	n/a
Tube Height (mm)	n/a

*No Adapters