

# Moticam **4000X-BMH** HDMI & USB

## FULL HD CAMERAS

The Moticam 4000X-BMH is a C-Mount multitasking microscopy camera, that delivers an impressive 1080p Full HD live image with maximum colour fidelity on an integrated LCD screen.

It does not require a computer for standard operation, as it comes with an on-board software that will allow you to use it through its 11.6" Full HD integrated screen, with a mouse connected to the USB port of the camera.



<https://www.motic.com/en/>

## FULL HD STANDALONE CAMERA



USB 3.0



8.0 MP



HDMI



GALLERY



FULL  
HD  
1080



## Moticam 4000X-BMH TECHNICAL SPECIFICATIONS

<b>Sensor Size</b>	1/2.8"
<b>Image output</b>	HDMI, UXC, WIFI 5
<b>Capture Resolution</b>	8MP
<b>Pixel Size</b>	1.45 x 1.45µm
<b>Scan mode</b>	Progressive
<b>Shutter mode</b>	Rolling Shutter
<b>Max. frames per second (fps*)</b>	HDMI: (4K)30fps @ 3840x2160 WIFI: 25fps @ 1920x1080 WIFI: 12fps @ 3840x2160 USB: (4K) 30fps @ 3840x2160
<b>Image Capture</b>	JPEG/TIFF Format with 4K(3840*2160) Resolution in SD Card
<b>Video Record</b>	4K(30fps@3840*2160) H264/H265 encoded MP4 file in SD Card
<b>Screen</b>	LCD 11.6" Full HD
<b>Software</b>	Motic Images Plus 3.1 for Windows/Mac OS
<b>On-board software</b>	Standard tools
(Camera connected through HDMI to a HD screen and through USB to a mouse)	Still image capture, Live image record, Zoom in & out, Magnifier, ROI, Mirror, Rotation, Split, Freeze, Cross line, Gallery.
	<b>Image adjustments (AE/AWB)</b>
	Auto/Manual Exposure mode, Gain, Target Brightness setting, Light Frequency, Auto/Manual White Balance mode.
	<b>Advanced settings</b>
	Saturation, Contrast, Gamma, Sharpness, Denoise, User settings, System's Time setting, Language (English, Chinese and Japanese), Format SD card.

\*frames per second under optimal illumination conditions

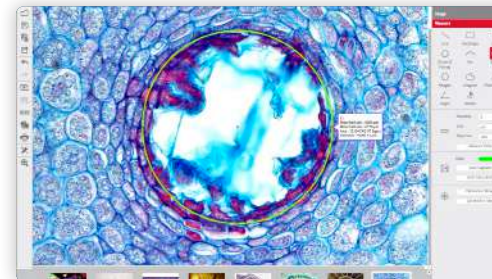
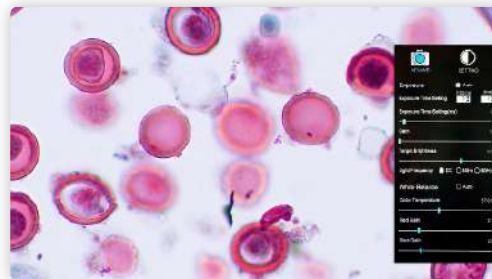
\*Design Change :The manufacturer reserves the right to make changes in instrument design in accordance with scientific & mechanical progress, without notice and without obligation.

### ON-BOARD SOFTWARE & MOTIC IMAGES PLUS 3.1 SOFTWARE

THE **[AllinOneBOX]** CONCEPT / Everything that you may need to work with your Moticam is included in one box

#### On-board software

The Moticam 4000X-BMH has its own built-in software, making it possible to view live images, make image adjustments or edit them. You can also capture images or record videos directly from a screen with the help of a mouse, storing them in an SD card.



#### Motic Images Plus 3.1

By connecting your Moticam to your computer you will be able to work with our well-known software, that comes included in the package. View, capture, edit, measure, make reports... all its standard features and the new ones packed in a new user-friendly interface.