



EXTRACTMAN[®]

MAGNETIC BEAD EXTRACTION PLATFORM

Uncover hidden weak protein complexes that are critical to your research

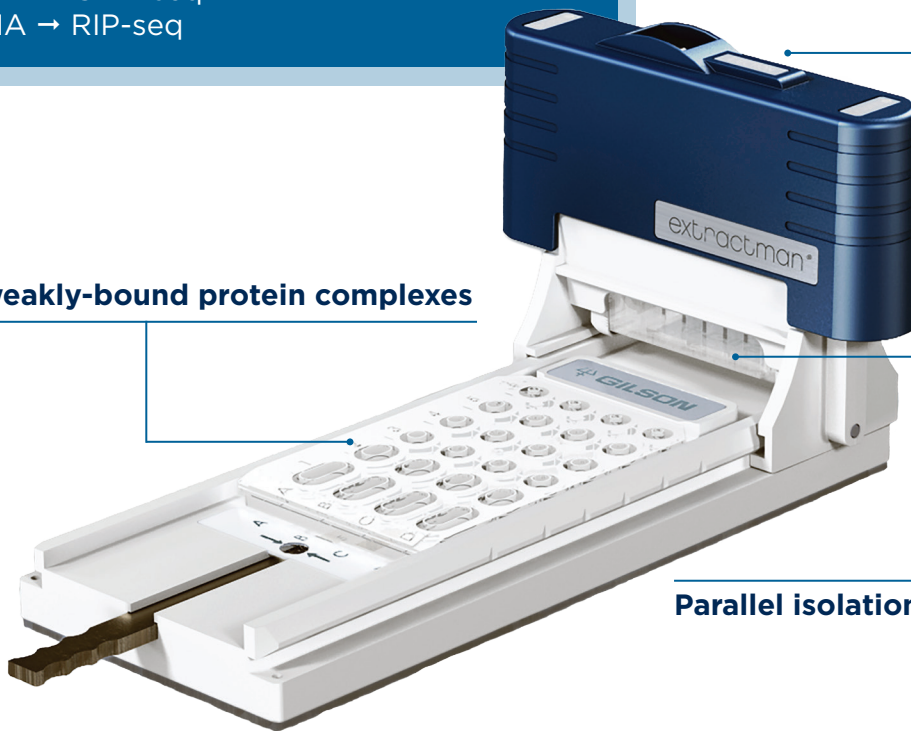
EXTRACTMAN[®] offers a faster, gentler magnetic mixing approach to isolating target proteins and is ideal for isolating elusive, weakly-bound protein complexes critical to protein interaction research.

APPLICATIONS

- Protein → Immunoprecipitation (IP)
- Protein-Protein → Co-Immunoprecipitation (Co-IP)
- Protein-DNA → ChiP-seq
- Protein-RNA → RIP-seq

Rapid Co-IP with a slide of the handle

Isolation of weakly-bound protein complexes



Parallel isolations for consistent results

REMOVES PURIFICATION BOTTLENECKS

ESP™ magnetic bead technology purifies samples faster than resins and columns.

PURIFIES MORE INTERACTORS

Gentle wash and fast isolation allows purification of protein complexes that are usually washed away.

ERGONOMIC AND EASY TO USE

Just slide the handle to isolate target proteins.

EXCLUSION-BASED SAMPLE PREP WITH EXTRACTMAN

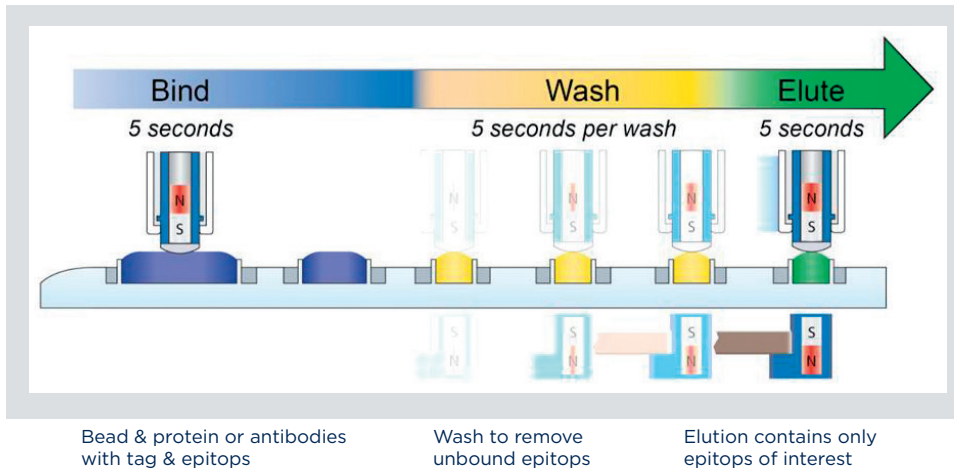


FIGURE 1

The revolutionary slide-based extraction gently moves your samples through isolation with a simple slide of the handle.

Flexible labware can easily be adapted to multiple washes, multiple targets, even completely new magnetic bead applications.

Traditional magnetic bead-based co-IP techniques require lengthy exposure to pro-dissociating wash buffers and harsh, inconsistent mixing column-based co-IP requires time consuming washing to remove contaminants and elute target analytes from porous resins.

EXTRACTMAN® is different. Using ESP technology, EXTRACTMAN is ideal for capturing weakly bound protein complexes because they are not exposed to high shear forces from pipet-based wash steps and require less time wash buffers. Paired with non-porous magnetic beads EXTRACTMAN enables high yield, high purity isolations without the need for long washing steps.

EXTRACTMAN PRESERVES INTERACTIONS

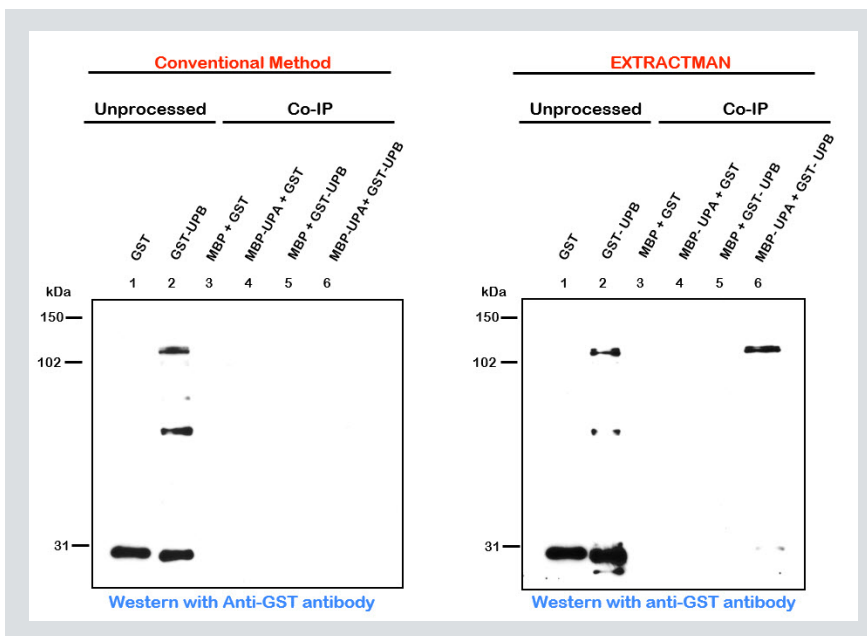


FIGURE 2

Western blot analysis of GST tagged proteins following Co-IP, by conventional protocol (left), and with the EXTRACTMAN® (right). The band in lane 6 shows isolation of a protein complex via EXTRACTMAN® that was not captured by the conventional co-IP.

PART NUMBER	DESCRIPTION
22100000	EXTRACTMAN® STARTER KIT: EXTRACTMAN® Handle Assembly, EXTRACTMAN® Base Assembly, 5 x Bead Collection Strips, EXTRACTMAN® User's Guide
22100007	EXTRACTMAN® Bead Capture Strip - 25 pack
22100008	EXTRACTMAN® 15 µl Extraction Plate - 25 pack