



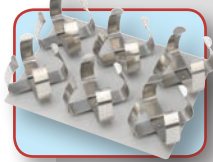
## Boekel Orbital Shaker

### FEATURES

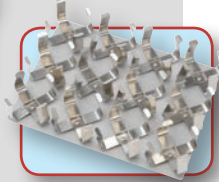
- Compact with low profile and small footprint
- Smooth horizontal orbital motion for mixing in bottles, flasks, and beakers
- Soft start and noise-free operation
- Can be used in an incubator 4°C to 40°C
- Platform not supplied. See interchangeable platforms listed below.
- Power pac is UL, CSA and CE approved
- Unit is CE marked

### ACCESSORIES

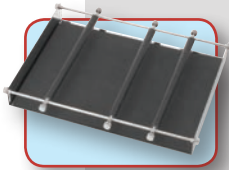
Catalog No.	Interchangeable Platforms
270290	6 x 250 mL flasks/400 mL beakers
270291	12 x 100 mL flasks/150 mL beakers
270292	Universal platform with adjustable bars
270293	Flat platform with rubber mat



270290



270291



270292



270293

### Orbital Shaker

Catalog No.	270200
Speed	50 to 300 rpm
Orbit	18 mm
Load Limit	5.5 lbs. / 2.5 kgs.
Timer (with auto shut off)	User defined up to 99 hours
Time setting resolution	1 min
Tray Dimensions W x D	10" x 8" (25.4 cm x 20.3 cm)
Product Dimensions W x D x H	10.5" x 11" x 4" (26.7 cm x 28 cm x 10 cm)
Power	12 V dc, 0.5 A via 115/ 230 V AC adapter
Shipping Weight	13 lbs. / 5.8 kgs.



## Orbitron V™ Platform Rotator

### FEATURES

- 3D gyrating motion
- 12" square aluminum tray with flat mat (standard)
- 8" square or 12" square double stacking tray (optional)
- Easy to adjust angle, no tools required
- Dimpled rubber mat (optional)
- Supplied with flat mat
- Unit is UL/CSA & CE marked

### ACCESSORIES

Catalog No.	Description
260288	Optional 8 inch Tray (Includes Platform, 1 each, flat and dimpled mat)
C 2202208	Dimpled rubber mat 12"
C 2202162	Flat rubber mat 12"
C 2202774	Dimpled rubber mat 8"
C 2202775	Flat rubber mat 8"
260312	Stacking tray 12"

### Orbitron V (115 VAC)

### Orbitron V (230 VAC)

Catalog No.	281111	281111-2
Variable speed	5-120 rpm orbits/min	5-120 rpm orbits/min
Variable tilt angle	0° - 12°	0° - 12°
Operating Temperature	Can operate at 4°C to 40°C	Can operate at 4°C to 40°C
Timer	Adjustable up to 12 hours	Adjustable up to 12 hours
Product Dimensions W x D x H	14" x 12" x 11" (35.5 cm x 30.4 cm x 27.9 cm)	14" x 12" x 11" (35.5 cm x 30.4 cm x 27.9 cm)
Load Limit	20 lbs. / 9 kgs.	20 lbs. / 9 kgs.
Power	115 VAC; 50/60Hz, 6 watts, 0.6 amps	230VAC; 50/60Hz, 60 Watts, 0.7 amps CE marked
Shipping Weight	25 lbs. / 11.4 kgs.	25 lbs. / 11.4 kgs.