

Spend more time on your research...  
**AutoMATE** your pipetting.

Intuitive  
programming  
and control

Process 96 or  
384 well  
plates

Automated tip  
loading &  
ejecting



Fill 96-well plates  
in **seconds**



Eliminate hand  
strain injury

- *Fast and accurate 96-channel pipetting*
- *Accepts 96/384 well microplates, PCR plates and reservoirs*
- *Touch-screen tablet for programming & operation*
- *4-position motorized platform*
- *Exchangeable pipette heads (1-20 $\mu$ L, 5-200 $\mu$ L, 100-1000 $\mu$ L)*

The **AutoMATE™ 96** from Accuris Instruments is a fully automated, high throughput liquid handling work-station that improves productivity when filling microplates. Capable of dispensing up to 96 channels simultaneously, the *AutoMATE 96* significantly reduces the processing time and errors associated with manual pipetting.

The included tablet features an intuitive app for programming and operation. Unlike many 96-well pipetting stations, the *AutoMATE 96* is “hands-free”, with motorized tip loading/ejection and a four position, automated, sliding platform that precisely aligns the tips with the appropriate microplate/reservoir. Once programmed, the instrument is capable of running protocols to completion without any user input.

Three interchangeable heads allow for a pipetting range from 1.0µL to 1000µL. The *AutoMATE 96* is compact enough to fit onto a standard lab bench or into a biosafety cabinet.

## Pipetting Modes:

### Standard Pipetting:

Aspirating and dispensing reagents by hand is labor-intensive and error prone. With the *AutoMATE 96*, reagents can be aspirated and dispensed automatically, ensuring accurate and precise transfer to and from microplates or reservoirs.

### Multi-Dispensing (Repeat Pipetting):

Filling multiple microplates manually is a time consuming process that can lead to hand fatigue and repetitive stress injuries. The Multi-dispensing function automates the filling process and accomplishes the task quickly without introducing hand strain or fatigue.

### Secondary-Dispensing (Plate Filling):

Many protocols and applications call for filling a plate with multiple samples or reagents. With the *AutoMATE 96*, multiple reagents can be aspirated and dispensed into the same microplate. For improved results, each dispense can be programmed to include a mixing step.

### Serial Dilutions:

Performing serial dilutions via manual methods is labor-intensive and error prone. Errors in this process will amplify subsequent dilutions as the process continues. With the *AutoMATE 96*, serial dilutions can be performed automatically and error free.

### Mixing:

Mixing reagents by hand is strenuous and can be inconsistent. With the *AutoMATE 96*, mixing can be performed automatically with adjustable speeds, ensuring consistency.

### Reverse Pipetting:

When the accuracy of pipetting volume is critical, the *AutoMATE 96* can be set to reverse pipetting mode. This technique greatly improves accuracy & precision with small volumes of biological fluids.



## Software and Programming

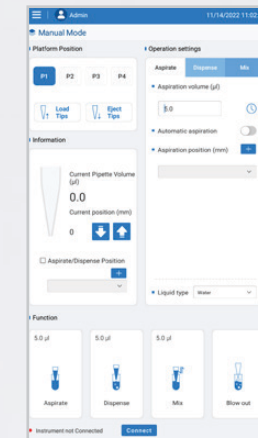
Two operating modes are available and can be selected per the user's preference.

### Manual Mode:

Perform operations quickly & efficiently simply by selecting each function individually.

Manual functions:

- Load tips
- Eject tips
- Aspirate reagents
- Dispense reagents
- Mix reagents
- Blow out reagents



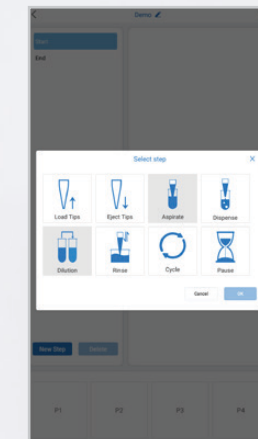
Manual Mode Interface

### Automated Program Mode:

Create a protocol made up of multiple steps in succession. This interface allows for complex protocols to be run from tip-loading through completion with the touch of a button.

Programmable steps:

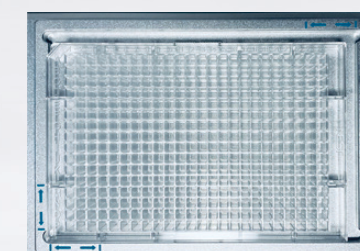
- Load/Eject Tips
- Aspirate/Dispense reagents
- Perform serial dilutions
- Rinse tips
- Repeat a cycle
- Pause after a certain step



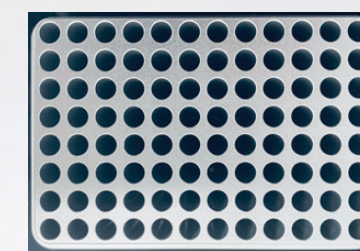
Automated Program Mode Interface

### Broad Labware Compatibility

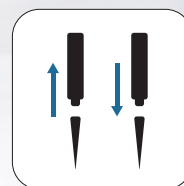
All brands of microplates and reservoirs meeting SLAS/ANSI formats are compatible for use with the *AutoMATE 96*. Included plate adapters allow 384 well microplates and PCR plates to be used.



384 Well Microplate Adapter



PCR Plate Adapter



### Fully Automated Tip Loading and Ejection

Motorized tip loading and ejection provides hands-free, consistent tip loading throughout all 96 wells.

Motorized, 4-position platform

## AutoMATE™ 96 Specifications

Display	8-inch color touch screen tablet (included)
Aspirate/Dispense volume	1-1000µL (depending on pipetting head)
Platform capacity	4 (tip racks/plates/reservoirs)
Channels	96 individual pistons
Pipetting technology	Air displacement
Compatible plate formats	96/384 well microplates, shallow/deep well plates, PCR plates
Communication ports	USB ports for importing/exporting
Voltage input	100-240 V, 50-60 Hz
Power	100W
Weight	32.6 kg / 71.8 lbs
Dimensions (WxDxH)	69.0 x 35.0 x 67.3 cm / 27.2 x 13.8 x 26.5 in.



Easy Replacement of Pipetting Head

## Pipetting Head Specifications

	MP9600-20PH (1-20µL)	MP9600-200PH (5-200µL)	MP9600-1000PH (100-1000µL)
Accuracy	≤±12 % at 1µL	≤±5 % at 5µL	≤±2.5 % at 100µL
	≤±5 % at 2 µL	≤±2 % at 20µL	≤±0.4 % at 500µL
	≤±1 % at 10µL	≤±1 % at 100µL	≤±1 % at 1000µL
	≤±1 % at 20µL	≤±1 % at 200µL	
Precision	≤10 % at 1µL	≤3.5 % at 5µL	≤1.25 % at 100µL
	≤5 % at 2µL	≤1.5 % at 20µL	≤0.4 % at 500 µL
	≤1 % at 10µL	≤0.8 % at 100µL	≤0.4 % at 1000µL
	≤0.8 % at 20µL	≤0.4 % at 200µL	

## Applications

- PCR/qPCR setup in PCR plates
- Cell culture prep, media change
- Reagent addition
- Replication of microplates
- 384 well plate set up (special adapter included)
- Preparation of cell-based assays
- ELISA preparation (plate coating, washing, aspirating, master mix preparation)

## Ordering Information

Cat No.	Description
MP9604*	AutoMATE™ 96 Microplate Pipetting Workstation (pipetting head not included), 115V
MP9600-20PH	Pipetting Head, 1-20µL
MP9600-200PH	Pipetting Head, 5-200µL
MP9600-1000PH	Pipetting Head, 100-1000µL
MP96-T20-LR	AutoMATE™ Pipette tips, racked 96 well, 20µL Low Retention, 24/cs
MP96-T20-LRFS	AutoMATE™ STERILE Pipette tips, racked 96 well, 20µL Filtered, Low Retention, 24/cs
MP96-T200-LR	AutoMATE™ Pipette tips, racked 96 well, 200µL Low Retention, 24/cs
MP96-T200-LRFS	AutoMATE™ STERILE Pipette tips, racked 96 well, 200µL Filtered, Low Retention, 24/cs
MP96-T1000-LR	AutoMATE™ Pipette tips, racked 96 well, 1000µL Low Retention, 16/cs
MP96-T1000-LRFS	AutoMATE™ STERILE Pipette tips, racked 96 well, 1000µL Filtered, Low Retention, 16/cs

\* Includes US plug. For EU plug, please add "-E".